



TransStock

beursgrafiek.be

▲ kopen ● verkopen

CompuGraphics



VFB TECHNISCHE ANALYSEDAG

HOGESCHOOL GENT ZATERDAG 18 FEBRUARI 2017

Mark Schils CompuGraphics



VFB: 13^{de} TA-Dag

the Pit
is
endless





VFB: 13^{de} TA-Dag



the Sky
is
the Limit



VFB: 13^{de} TA-Dag

TA

≠

WETENSCHAP



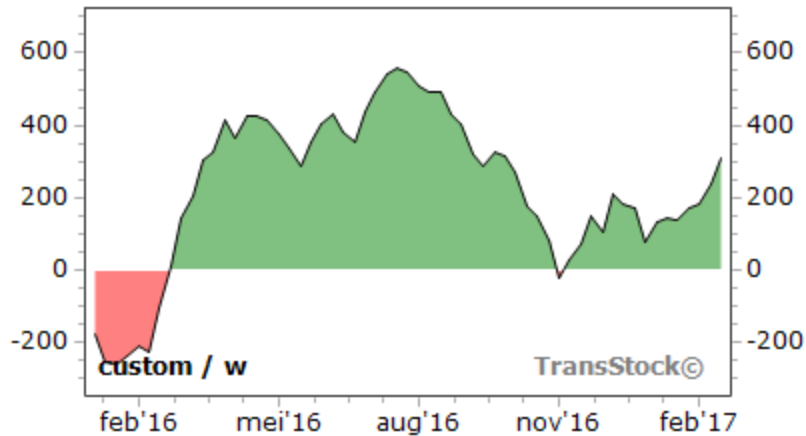
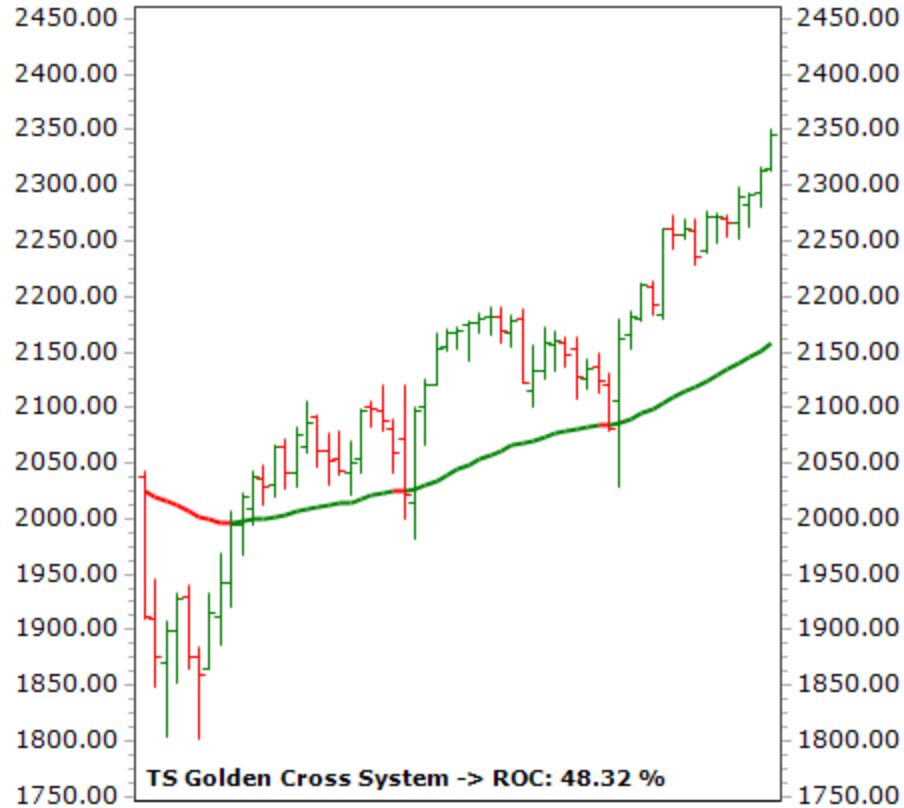
VFB: 13^{de} TA-Dag

EENVOUD

BEEELD

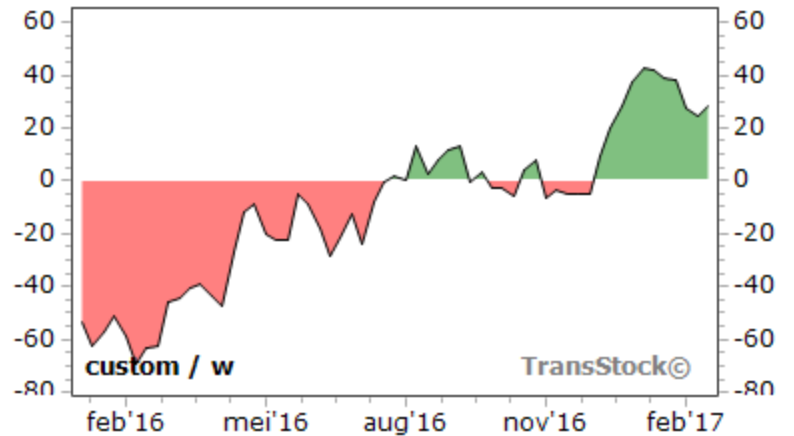
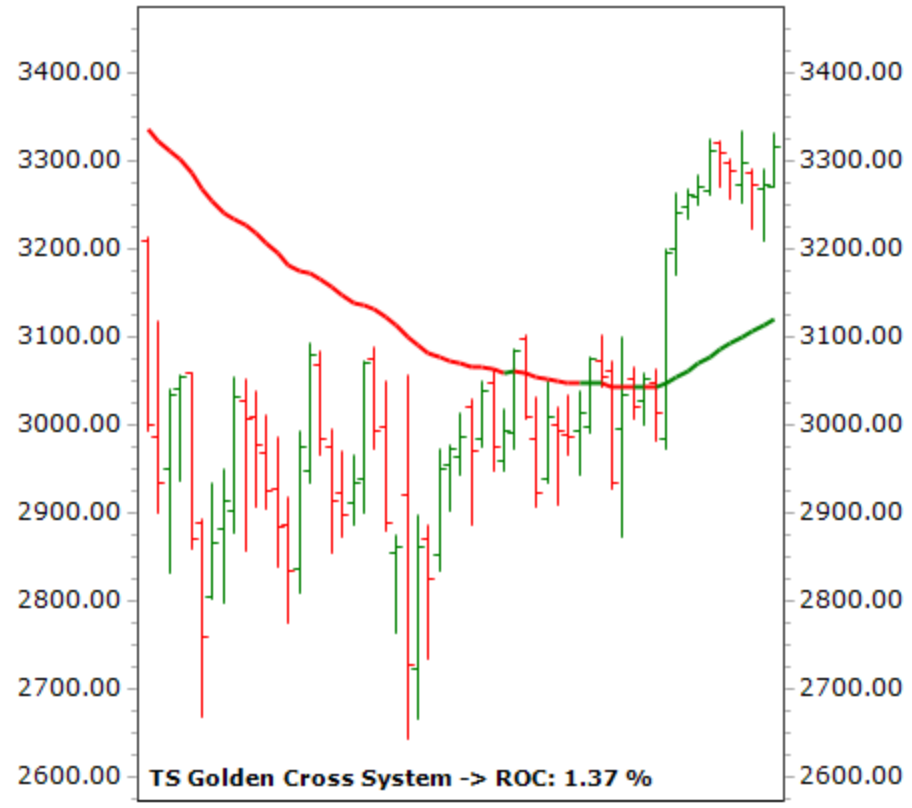
Sentiment US

16-2-2017



Sentiment EU

16-2-2017





VFB: 13^{de} TA-Dag

| Naam | Diff% | Diff% | Diff% | Diff% |
|------------------------------|-----------------------|------------------------|------------------------|----------------------|
| | 1-1-2016 - 31-12-2016 | 27-6-2016 - 31-12-2016 | 9-11-2016 - 31-12-2016 | 1-1-2017 - 17-2-2017 |
| | 1 jaar | 6 maanden and 1 dag | 1 maand and 21 dagen | YTD |
| _belgium Bel-20 | -0.35 | 15.57 | 2.58 | -0.30 |
| _france Cac 40 | 7.96 | 22.53 | 7.46 | 0.35 |
| _germany Dax | 12.79 | 25.13 | 8.95 | 1.37 |
| _netherlands Aex | 12.66 | 18.16 | 7.05 | 1.56 |
| _uk Ftse 100 | 17.80 | 19.99 | 3.85 | 1.39 |
| _us Dow Jones Industrials 30 | 15.94 | 15.99 | 6.95 | 3.71 |
| _us Nasdaq 100 | 9.19 | 16.91 | 1.79 | 7.93 |
| _us S&p 500 | 12.18 | 12.86 | 4.37 | 3.96 |



VFB: 13^{de} TA-Dag

**STOXX 600 : 1/1/2016- 9/11/2016 :
+3.24%**

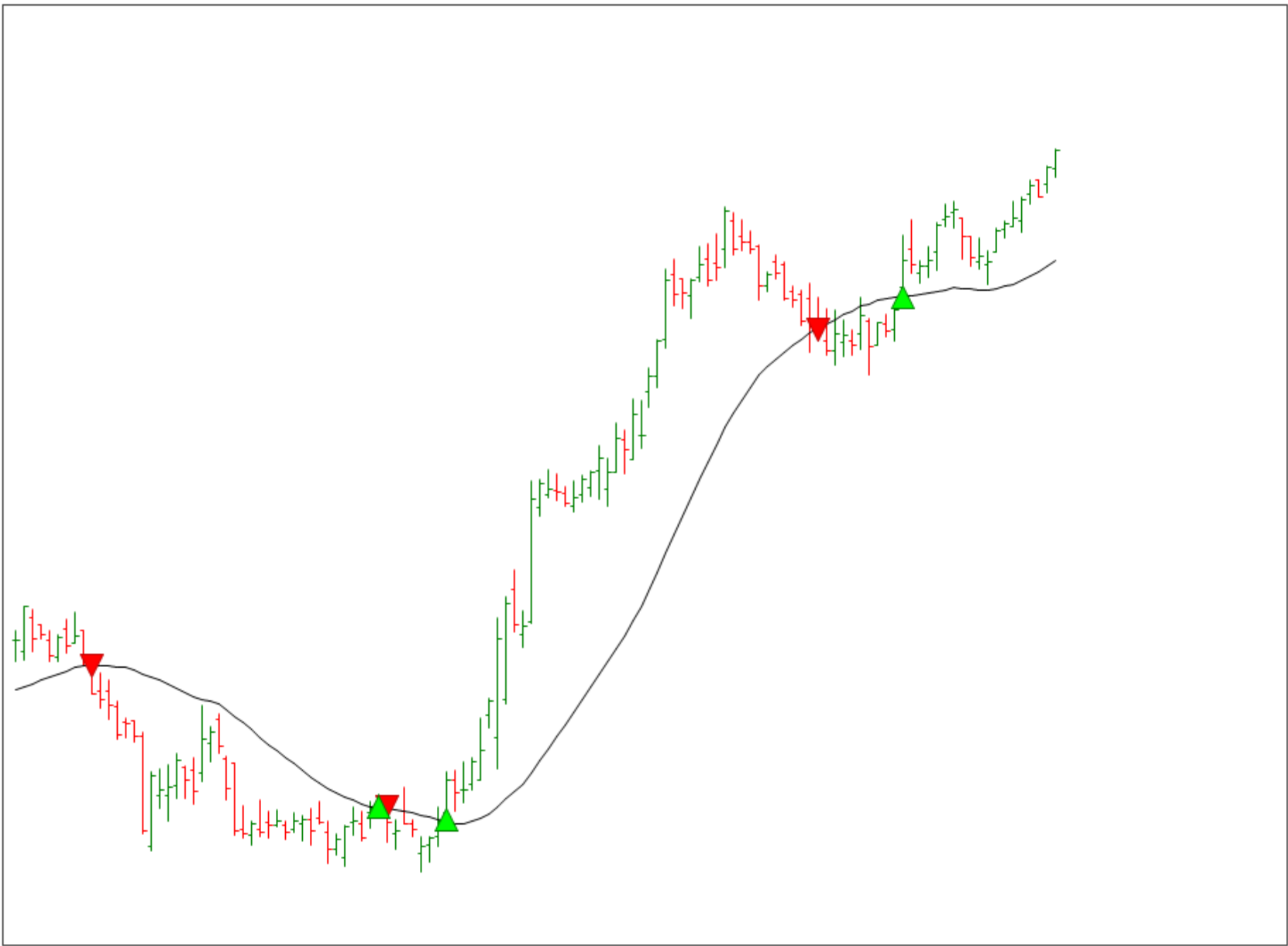
**S&P 500 : 1/1/2016- 9/11/2016 :
+8.82%**



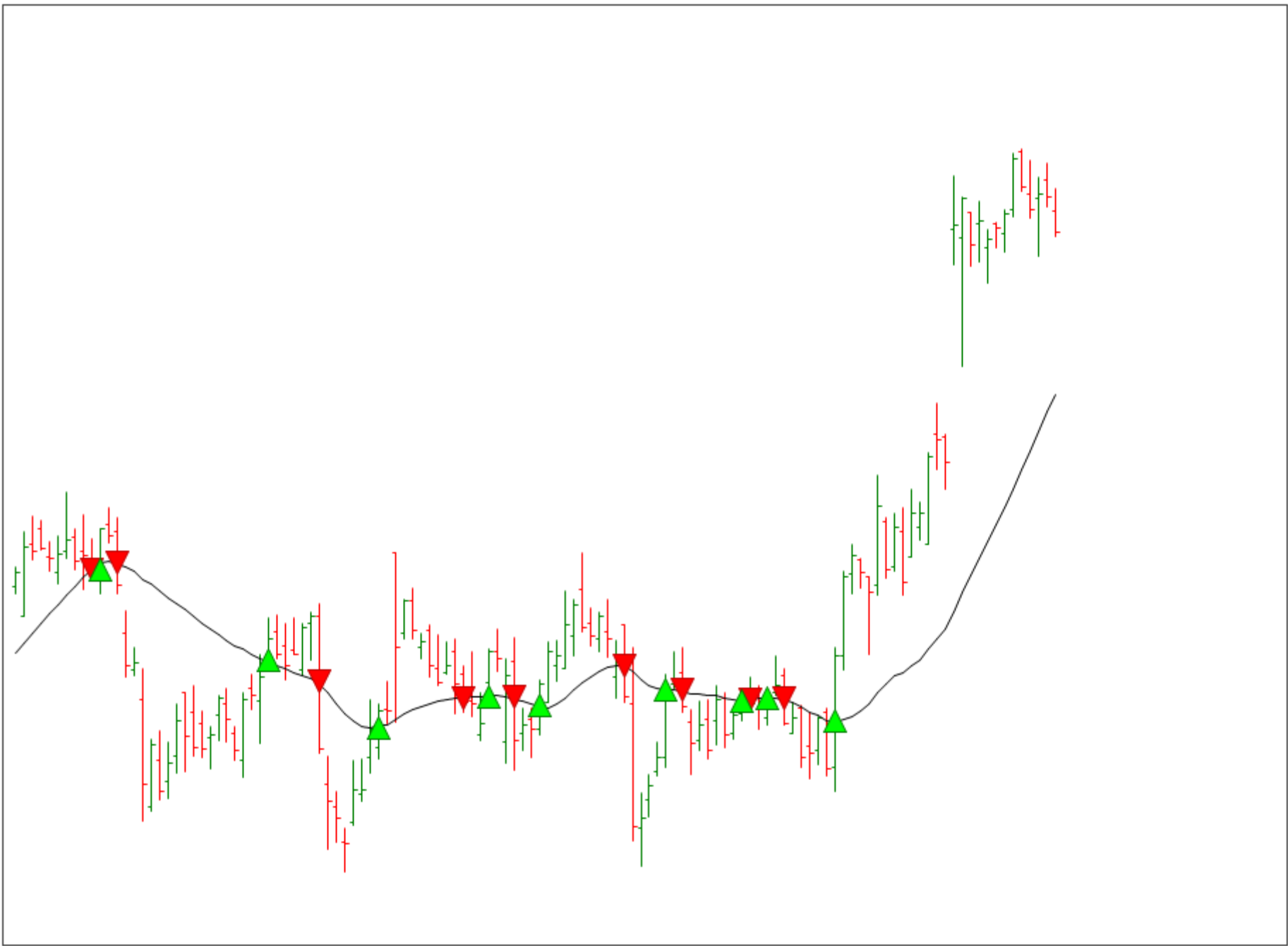
VFB: 13^{de} TA-Dag

KOPEN AAN BODEM









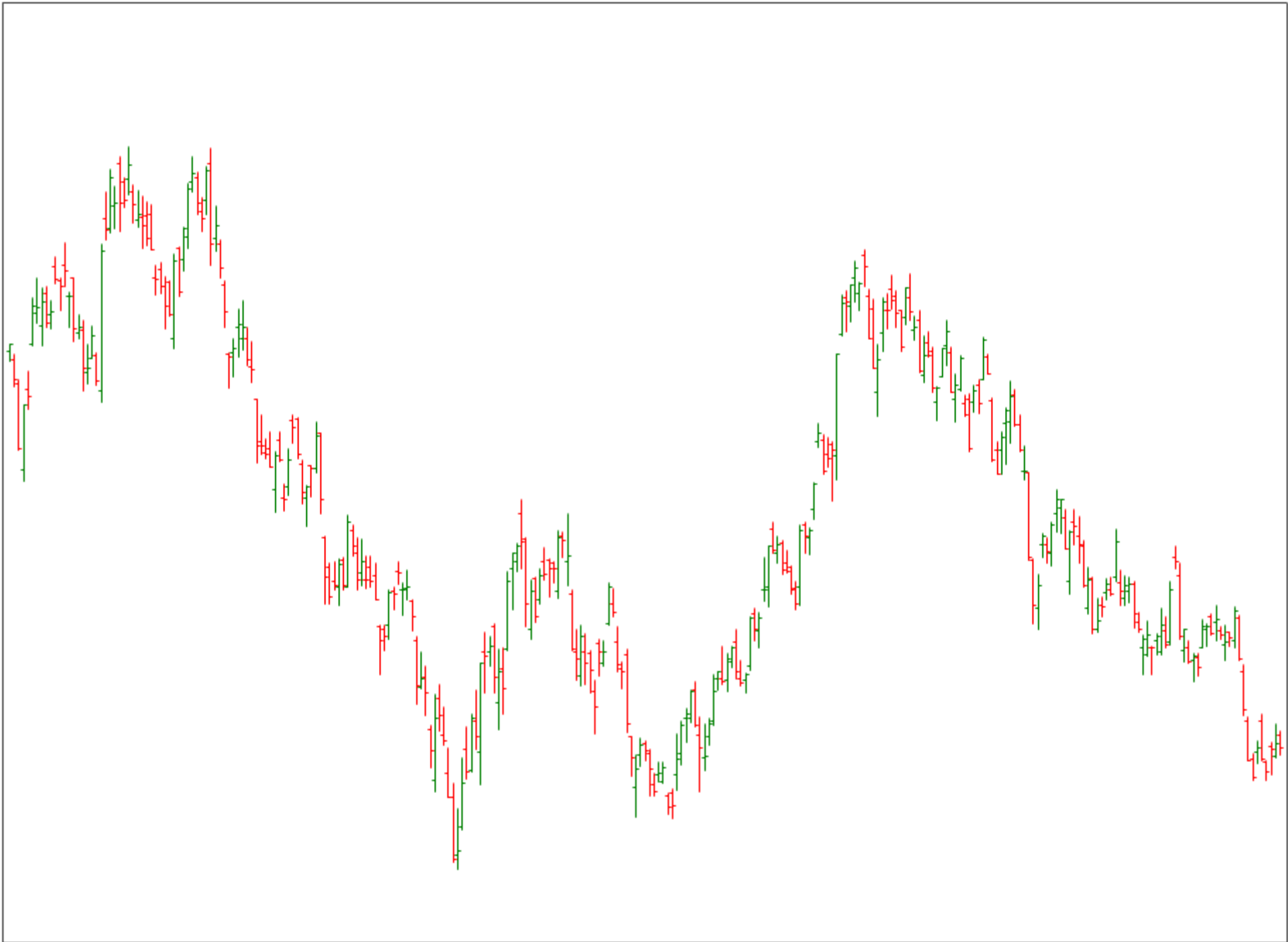


JUST ONE LITTLE
PROBLEM TO DEAL
WITH, THEN.

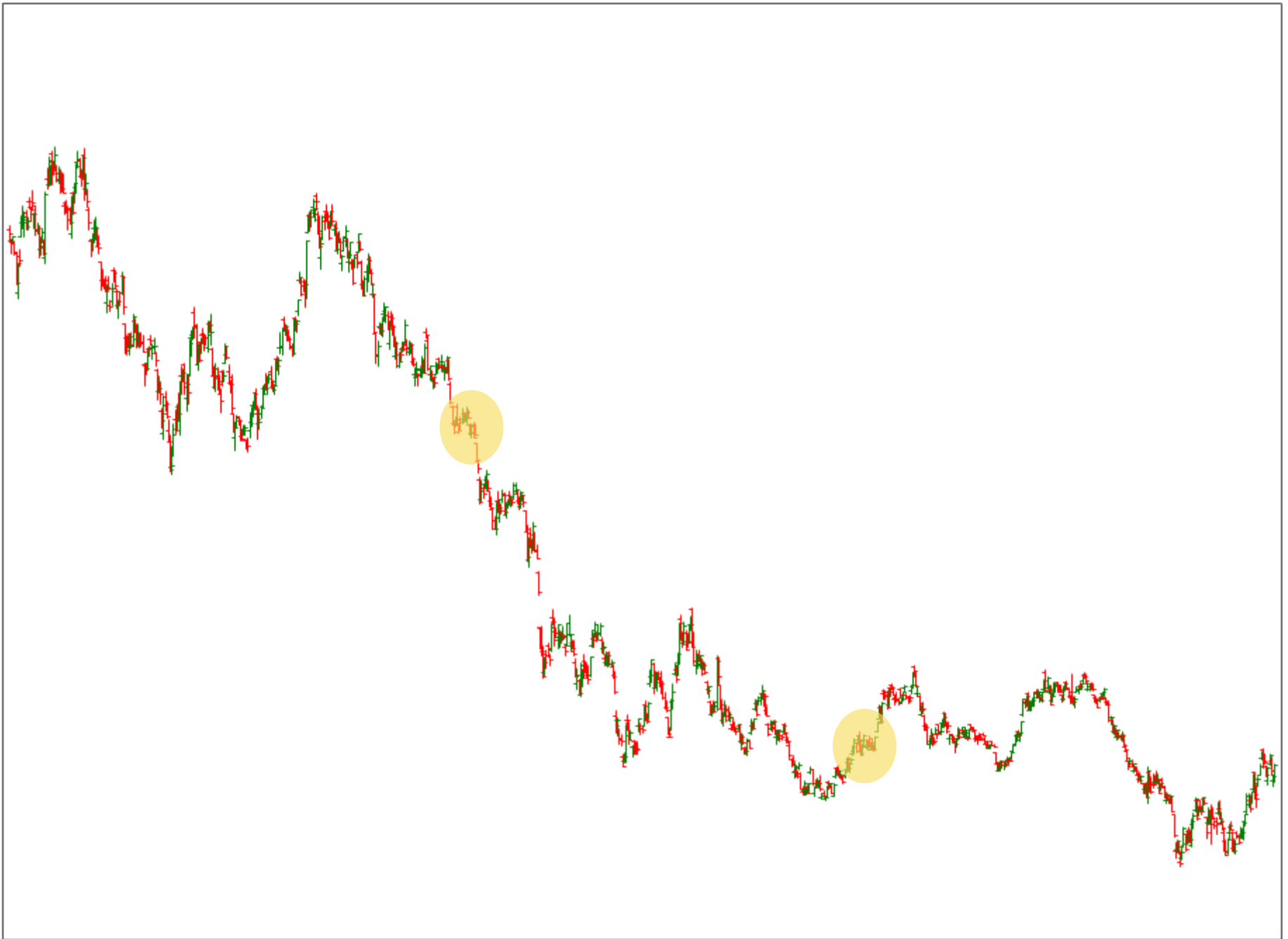


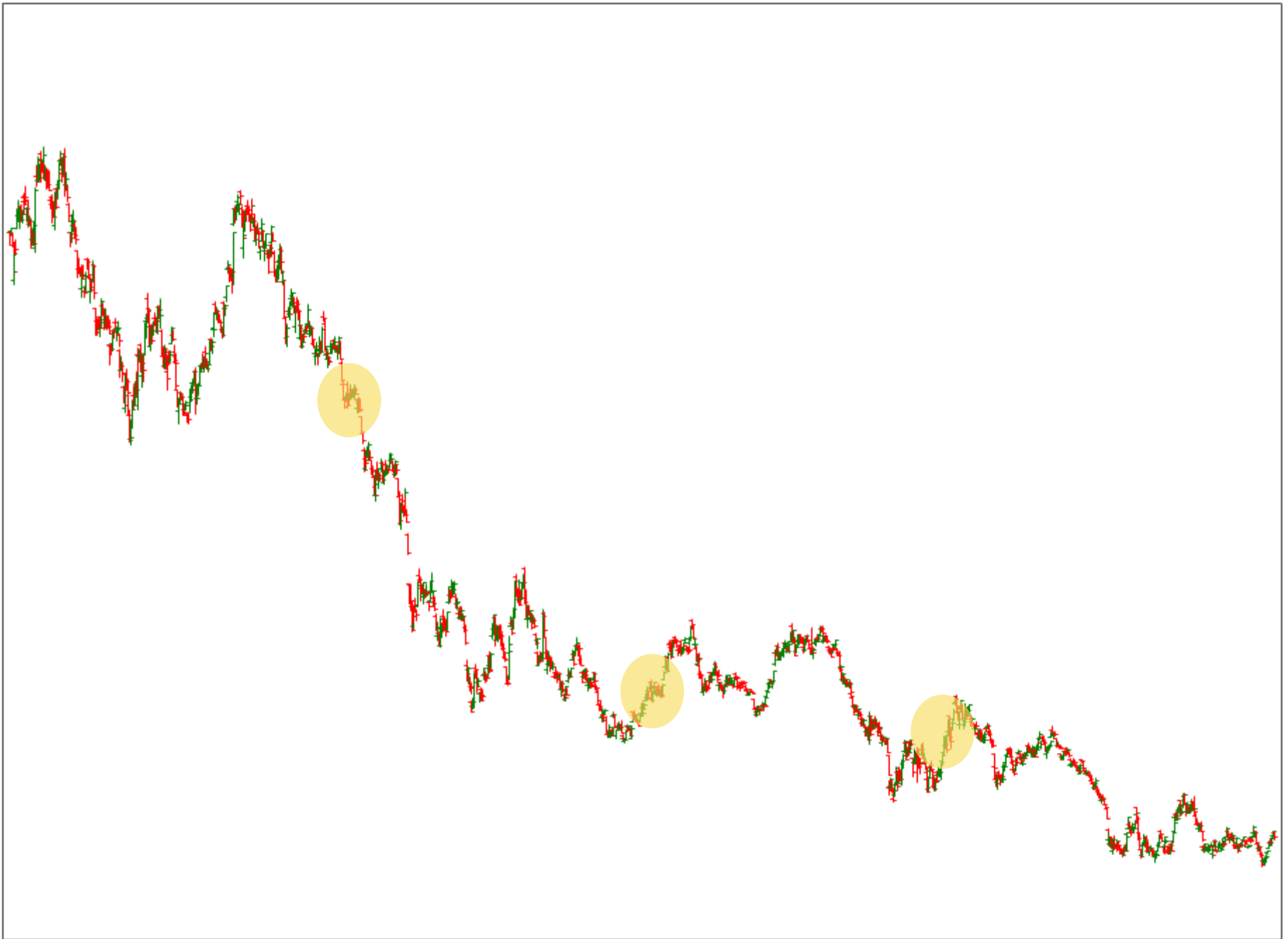
VFB: 13^{de} TA-Dag

BIJKOPEN IN DALING







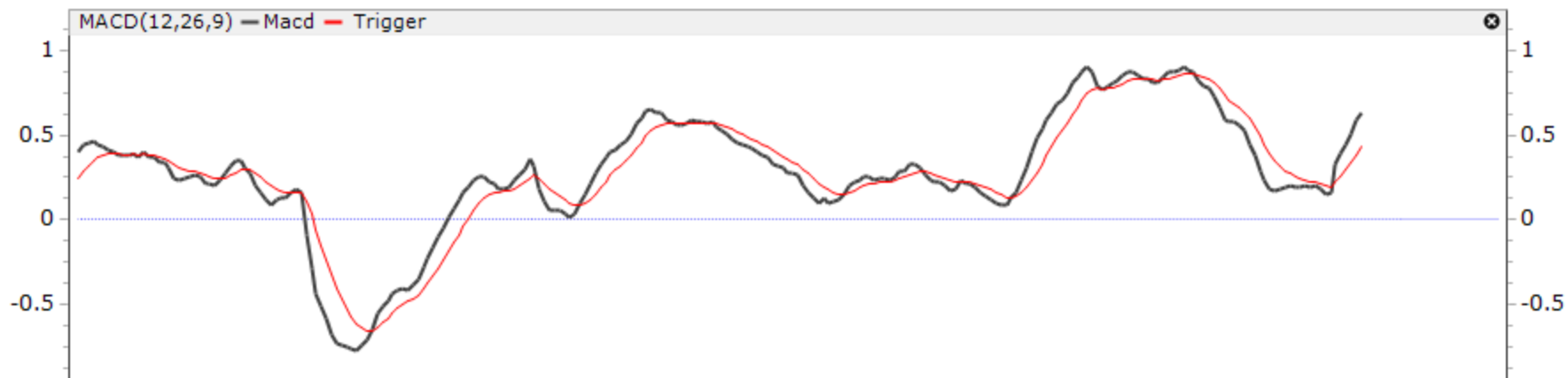


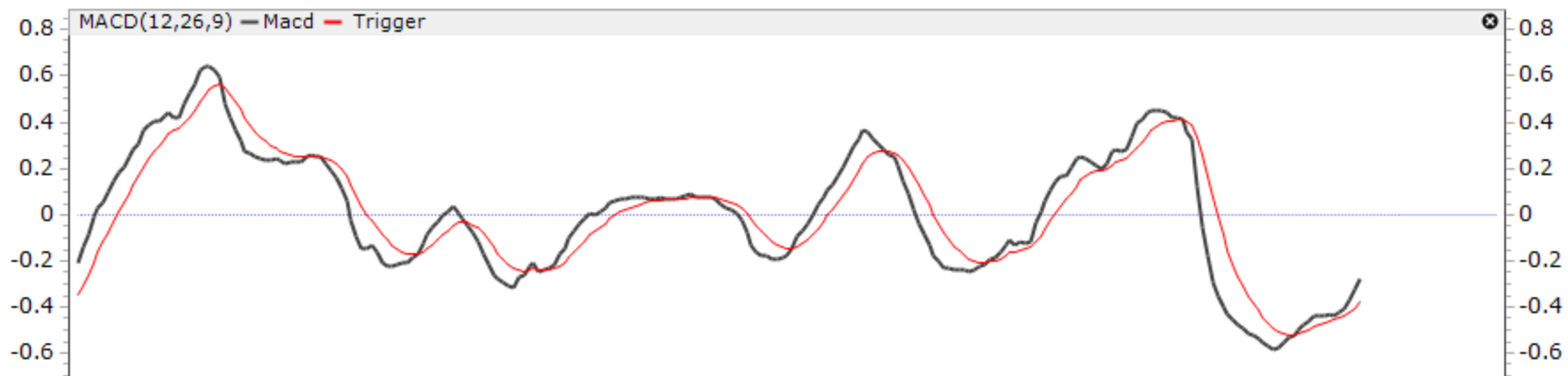


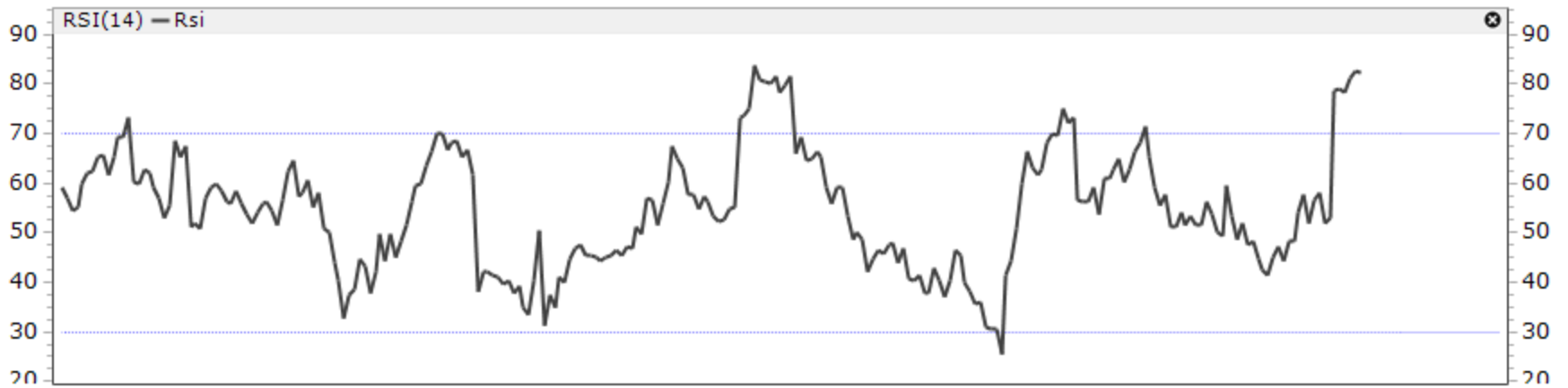


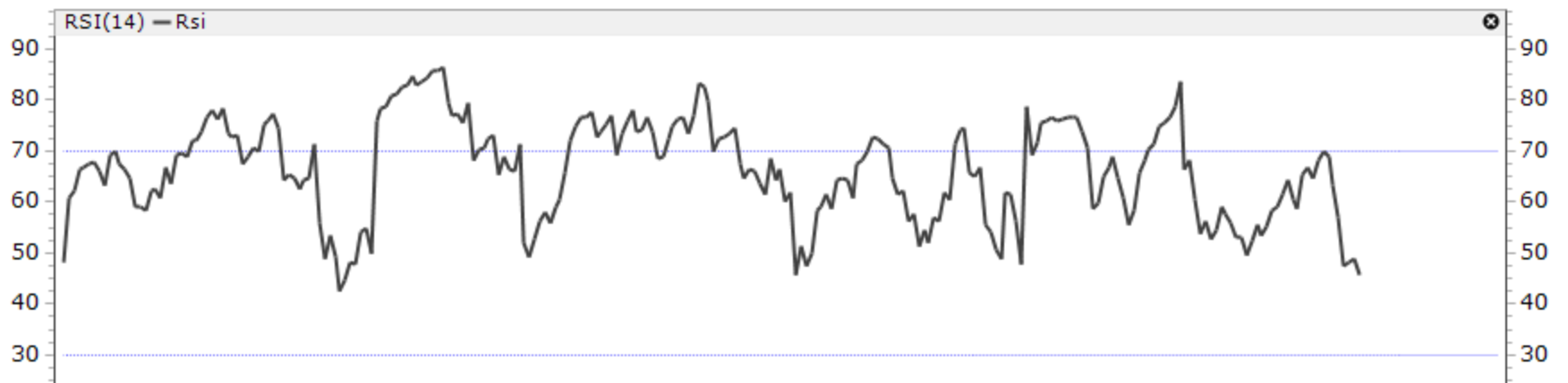
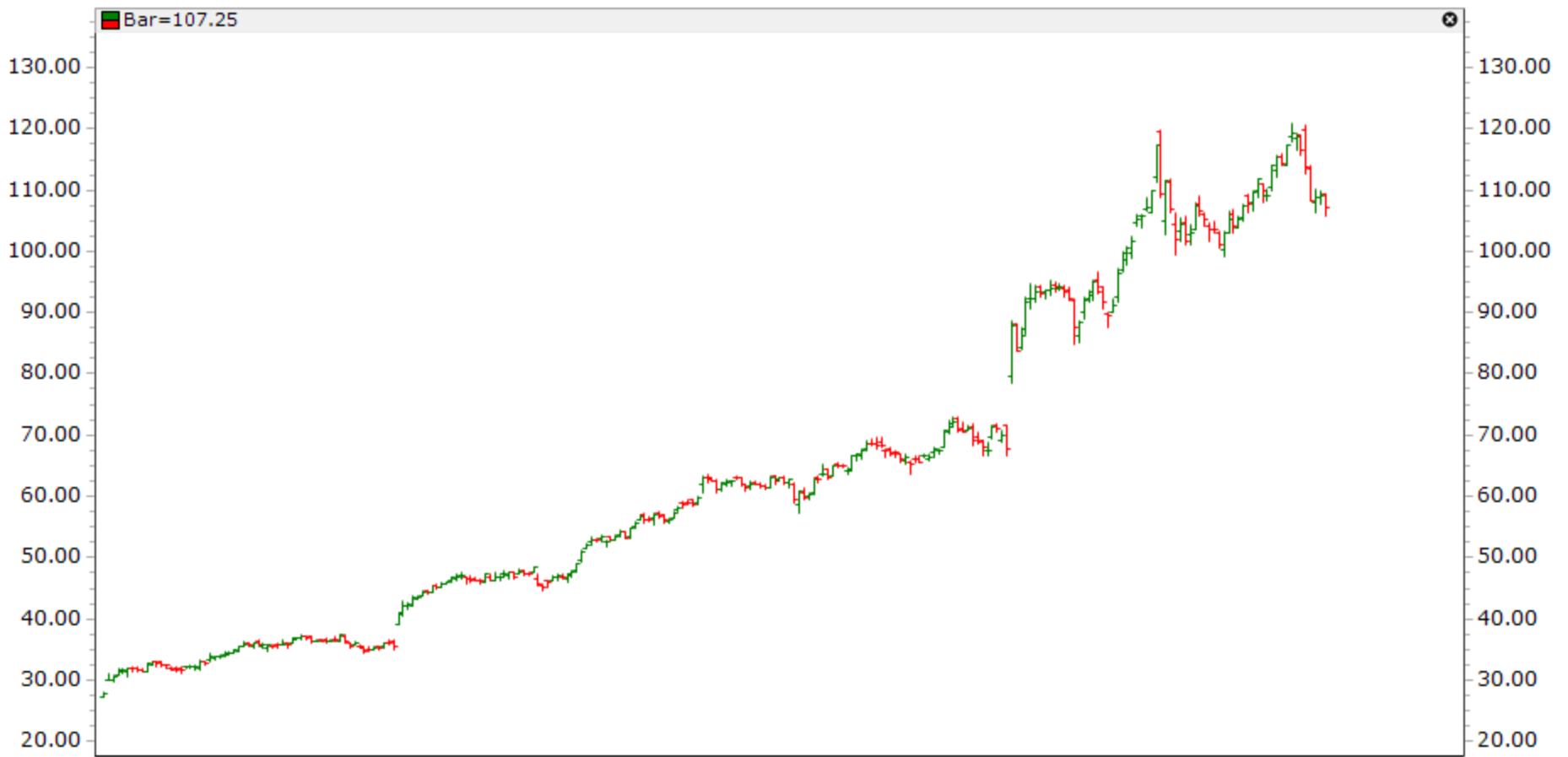
VFB: 13^{de} TA-Dag

KOPEN MBV INDICATOREN













VFB: 13^{de} TA-Dag

BELEGGER

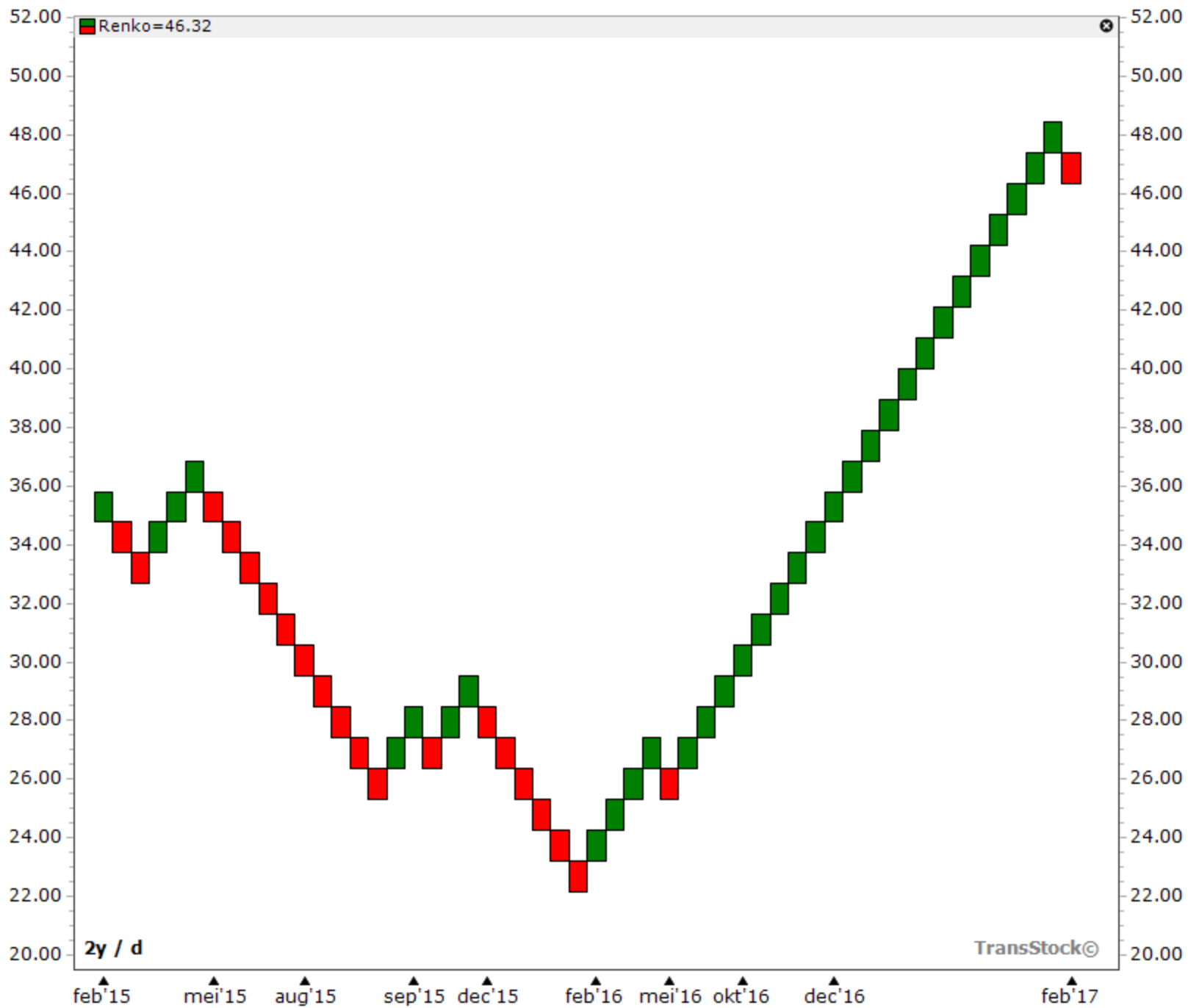
- TREND
- MACD : trend
- RSI : nontrend

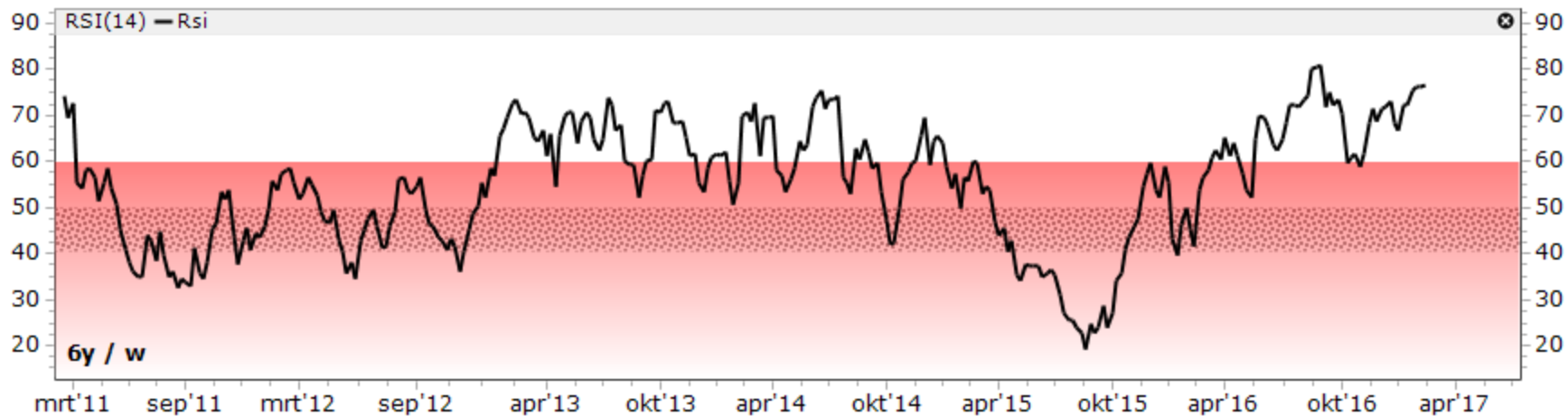


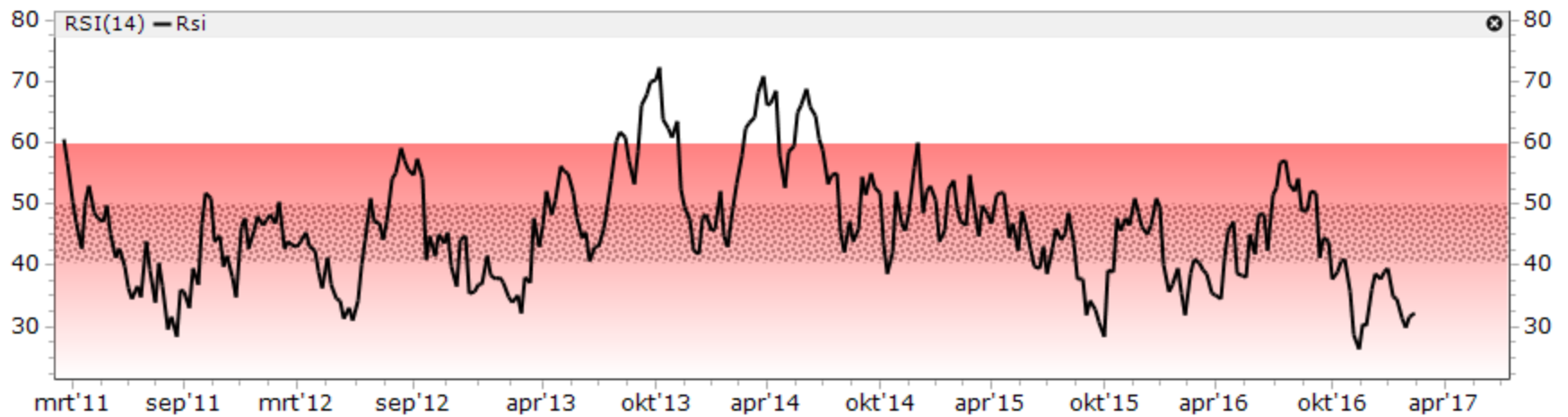
VFB: 13^{de} TA-Dag

EENVOUD

BEEELD









VFB: 13^{de} TA-Dag

BELEGGER

STOCKPICKING

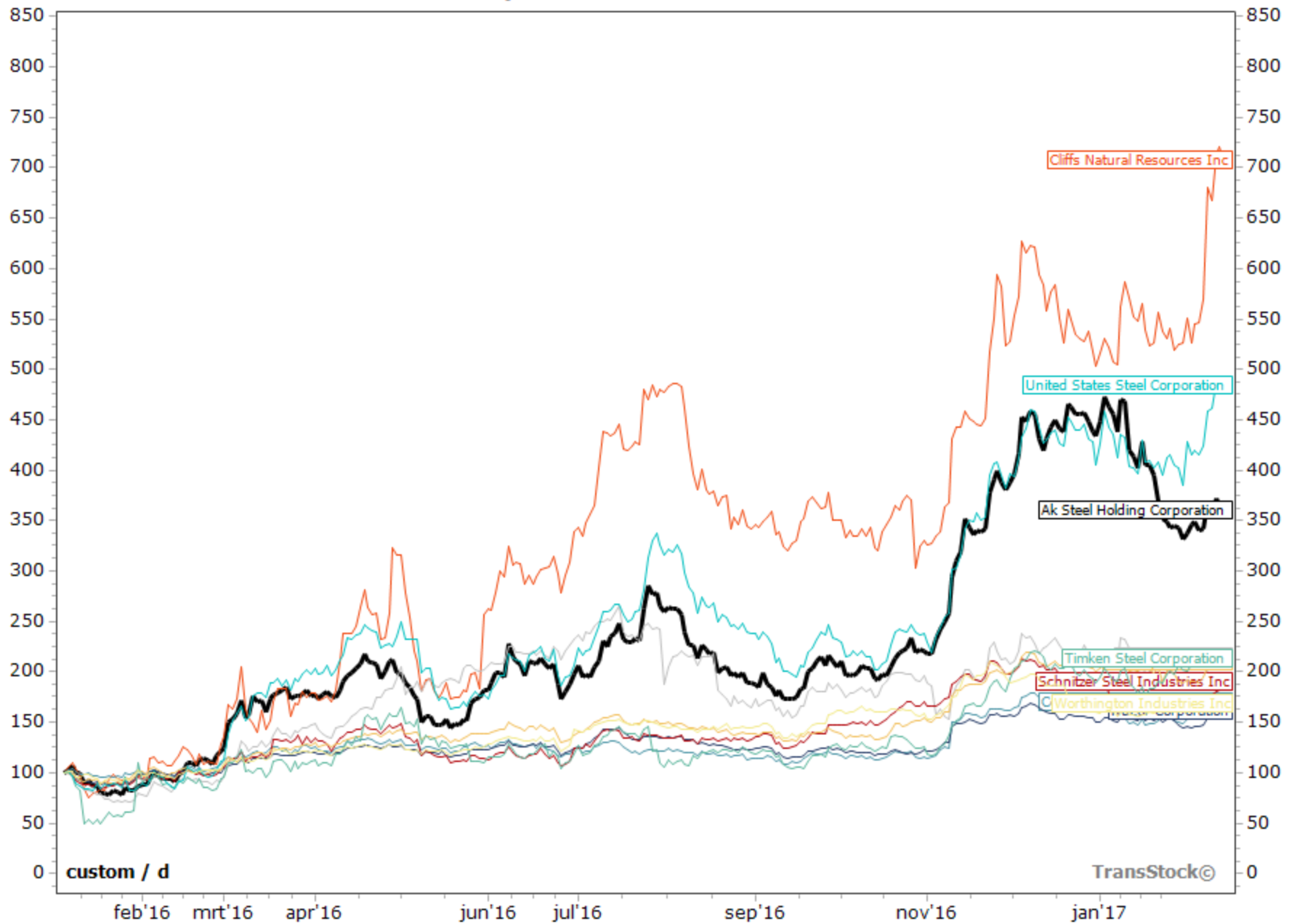
XETRA - Adidas Ag - E:ADS - Persoonlijke en huishoudproducten

Schoeisel - EUR - 15-2-2017



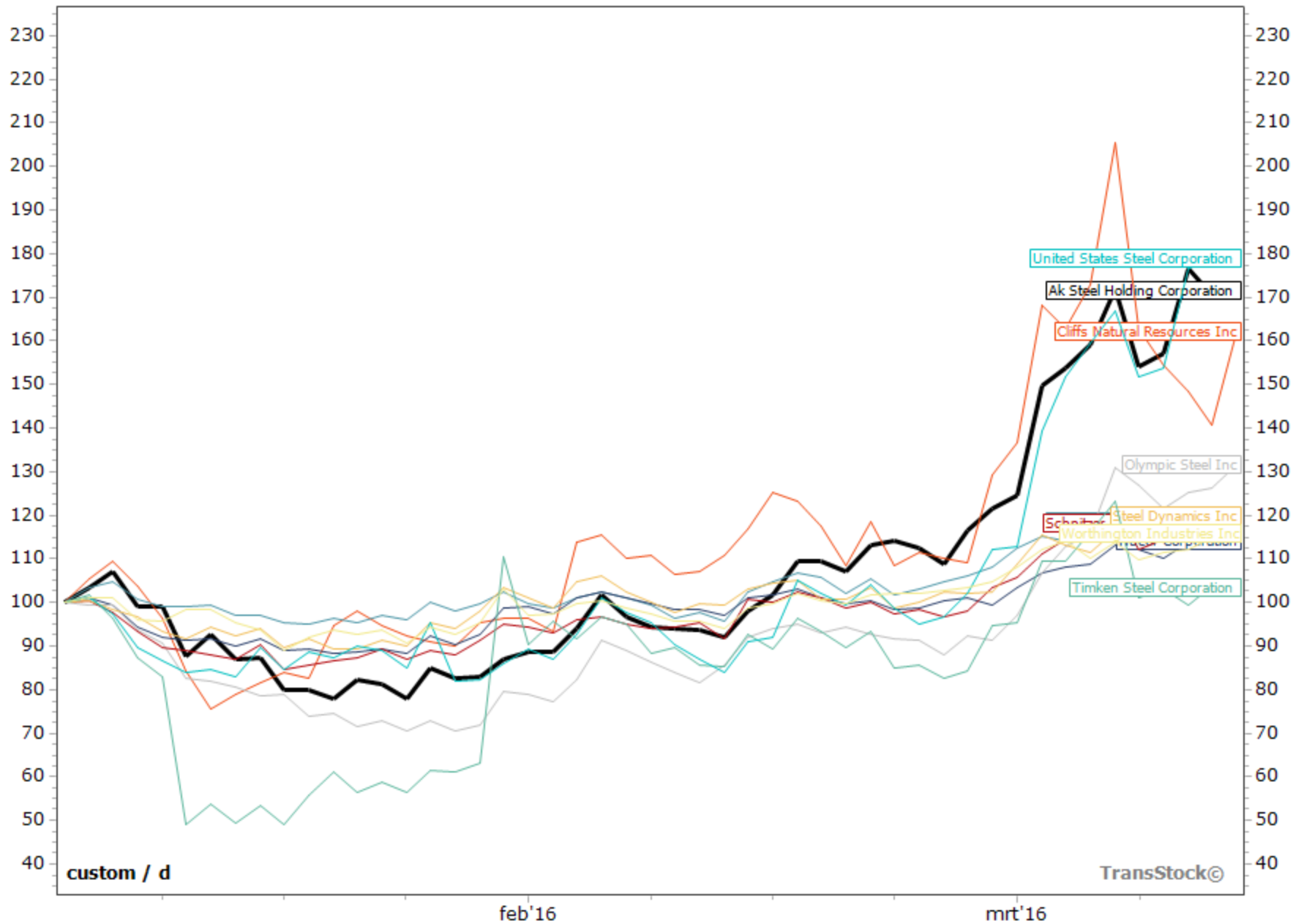
USA-NYSE - Ak Steel Holding Corporation - AKS - GRONDSTOFFEN

Ijzer & Staal - USD - 15-2-2017



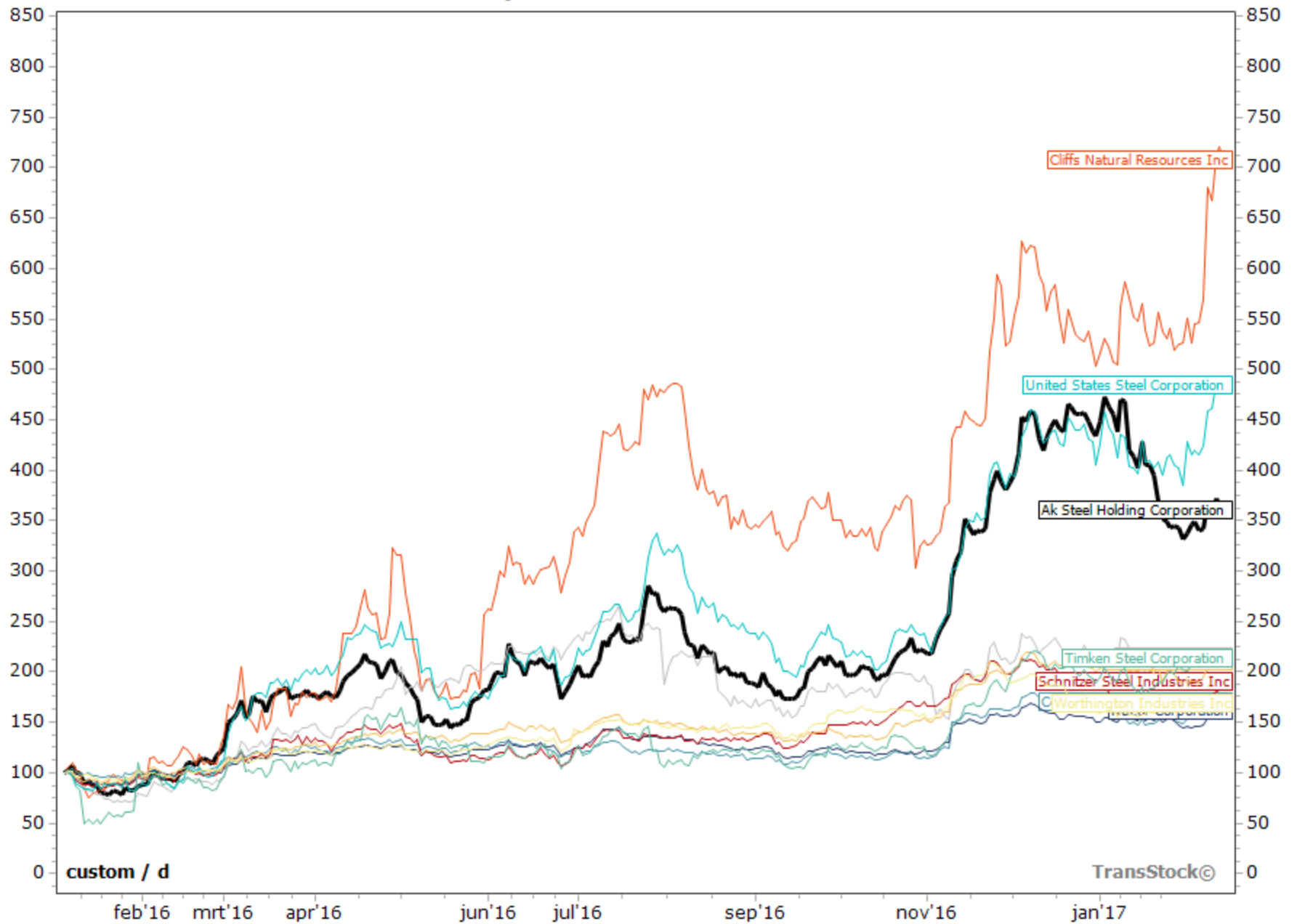
USA-NYSE - Ak Steel Holding Corporation - AKS - GRONDSTOFFEN

Ijzer & Staal - USD - 15-2-2017



USA-NYSE - Ak Steel Holding Corporation - AKS - GRONDSTOFFEN

Ijzer & Staal - USD - 15-2-2017





VFB: 13^{de} TA-Dag

BELEGGER

**GA VOOR DE STERKE TITELS
BIJ DE START VAN NIEUWE CYCLUS**

INTERNATIONAL EXCHANGES - _us Nasdaq 100 - I:NDX

USD - 15-2-2017



| Naam | Ticker | Sector | Diff% | CompPerf |
|-------------------------------|--------|-----------------------------|-----------------------|--------------------------------------|
| | | | 1-1-2016 - 31-12-2016 | 1-1-2016 - 31-3-2016; _us Nasdaq 100 |
| | | | 1 jaar | 2 maanden and 28 dagen |
| Nvidia Corporation | NVDA | Technology | 215.14 | 110.42 |
| Applied Materials Inc | AMAT | Technology | 72.93 | 115.04 |
| Micron Technology Inc | MU | Technology | 57.36 | 73.29 |
| T-mobile Usa Inc | TMUS | Telecommunications | 49.73 | 98.64 |
| Linear Technology Corporation | LLTC | Technology | 48.35 | 106.41 |
| Charter Communications Inc | CHTR | Telecommunications | 45.55 | 114.39 |
| Ulta Beauty Inc | ULTA | Retail | 41.18 | 106.90 |
| Csx Corporation | CSX | Industrial Goods & Services | 39.16 | 100.16 |
| Microchip Technology Inc | MCHP | Technology | 38.86 | 105.16 |
| Paccar Inc | PCAR | Industrial Goods & Services | 38.51 | 116.33 |
| Lam Research Corporation | LRCX | Technology | 37.99 | 106.60 |
| Netapp Inc | NTAP | Technology | 36.70 | 105.21 |
| Texas Instruments Inc | TXN | Technology | 35.41 | 106.00 |
| Analog Devices Inc | ADI | Technology | 33.18 | 109.07 |
| Qualcomm Inc | QCOM | Technology | 30.49 | 102.36 |
| Akamai Technologies Inc | AKAM | Technology | 29.17 | 106.57 |
| Xilinx Inc | XLNX | Technology | 28.97 | 103.89 |
| Netease.com Inc | NTES | Technology | 26.75 | 83.68 |
| Autodesk Inc | ADSK | Technology | 26.31 | 96.99 |
| Marriott International | MAR | Travel & Leisure | 26.19 | 109.22 |
| Automatic Data Processing Inc | ADP | Industrial Goods & Services | 26.11 | 109.66 |
| Broadcom Ltd | AVGO | Industrial Goods & Services | 25.34 | 108.93 |
| Comcast Corporation A | CMCSA | Media | 24.10 | 110.12 |
| Yahoo! Inc | YHOO | Technology | 23.89 | 117.60 |
| Intuit Inc | INTU | Technology | 21.58 | 110.55 |
| Citrix Systems Inc | CTXS | Technology | 21.52 | 106.28 |
| Ross Stores Inc | ROST | Retail | 20.67 | 106.83 |
| Kraft Heinz Company | KHC | Food & Beverage | 20.40 | 108.40 |
| Fiserv Inc | FISV | Industrial Goods & Services | 19.93 | 114.98 |
| Electronic Arts Inc | EA | Personal & Household Goods | 19.77 | 100.33 |
| The Priceline Group Inc | PCLN | Travel & Leisure | 18.65 | 103.83 |

| Naam | Ticker | Sector | Diff% | CompPerf |
|---------------------------------------|--------|-----------------------------|--------|----------|
| Biogen Inc | BIIB | Health Care | -0.99 | 88.64 |
| Activision Blizzard Inc | ATVI | Personal & Household Goods | -2.60 | 90.24 |
| Cognizant Technology Solutions Co... | CTSH | Technology | -2.77 | 108.20 |
| Tesla Inc | TSLA | Automobiles & Parts | -2.87 | 103.17 |
| Skywork Solutions Inc | SWKS | Technology | -3.57 | 100.28 |
| Amgen Inc | AMGN | Health Care | -4.81 | 94.99 |
| Starbucks Corporation | SBUX | Travel & Leisure | -4.99 | 102.80 |
| Monster Beverage Corporation | MNST | Food & Beverage | -5.35 | 92.70 |
| Expedia Inc | EXPE | Travel & Leisure | -6.92 | 89.54 |
| Whole Foods Market Inc | WFM | Retail | -7.15 | 93.80 |
| Baidu.com Inc | BIDU | Technology | -8.55 | 104.05 |
| Tractor Supply Company | TSCO | Retail | -9.37 | 108.35 |
| Ctrip.com International Ltd | CTRP | Travel & Leisure | -10.48 | 98.17 |
| Viacom Inc Cl B | VIAB | Media | -12.05 | 101.45 |
| Jd.com Inc | JD | Retail | -12.56 | 90.02 |
| Liberty Ventures Corporation Cl A | LVNTA | Industrial Goods & Services | -14.42 | 90.53 |
| Cerner Corporation | CERN | Technology | -15.06 | 91.35 |
| Bed Bath & Beyond Inc | BBBY | Retail | -15.60 | 102.74 |
| Biomarin Pharmaceutical Inc | BMRN | Health Care | -18.19 | 78.86 |
| Express Scripts Holding Company | ESRX | Health Care | -19.89 | 79.54 |
| Vodafone Group Plc | VOD | Telecommunications | -22.46 | 99.88 |
| Liberty Global Inc B | LBTYB | Media | -22.63 | 77.34 |
| Gilead Sciences Inc | GILD | Health Care | -24.33 | 94.02 |
| Liberty Interactive Corporation Qv... | QVCA | Media | -25.48 | 94.48 |
| Norwegian Cruise Line Holdings Ltd | NCLH | Travel & Leisure | -26.21 | 95.65 |
| Regeneron Pharmaceuticals Inc | REGN | Health Care | -26.49 | 70.00 |
| Liberty Global Inc A | LBTYA | Media | -26.59 | 92.51 |
| Mylan Nv | MYL | Health Care | -26.60 | 87.27 |
| Illumina Inc | ILMN | Health Care | -27.66 | 89.71 |
| Alexion Pharmaceuticals Inc | ALXN | Health Care | -33.60 | 75.62 |
| Stericycle Inc | SRCL | Industrial Goods & Services | -35.66 | 107.40 |
| Vertex Pharmaceuticals Inc | VRTX | Health Care | -39.06 | 64.89 |
| Tripadvisor Inc | TRIP | Media | -42.75 | 80.39 |

EUR - 15-2-2017



| Naam | Ticker | Sector | Diff% | CompPerf |
|-----------------------|--------|-----------------------------|-----------------------|--------------------------------------|
| | | | 1-1-2016 - 31-12-2016 | 1-1-2016 - 31-3-2016; _france Cac 40 |
| | | | 1 jaar | 2 maanden and 28 dagen |
| Arcelormittal | E:MT | Basic Resources | 143.74 | 142.08 |
| Kering | E:KER | Retail | 42.72 | 106.73 |
| Lvmh | E:MC | Personal & Household Goods | 30.60 | 111.51 |
| Schneider | E:SU | Industrial Goods & Services | 29.10 | 111.88 |
| Michelin | E:ML | Automobiles & Parts | 24.90 | 108.36 |
| Sodexo | E:SW | Travel & Leisure | 24.51 | 110.54 |
| Total | E:FP | Oil & Gas | 20.42 | 101.95 |
| Valeo | E:FR | Automobiles & Parts | 20.17 | 102.72 |
| Bnp Paribas | E:BNP | Banks | 17.83 | 89.06 |
| Solvay | E:SOLB | Chemicals | 16.47 | 94.71 |
| L Oreal | E:OR | Personal & Household Goods | 14.94 | 107.61 |
| Saint Gobain | E:SGO | Construction & Materials | 14.21 | 102.92 |
| Societe Generale A | E:GLE | Banks | 13.31 | 80.92 |
| Vinci | E:DG | Construction & Materials | 11.99 | 116.96 |
| Credit Agricole | E:ACA | Banks | 11.68 | 92.43 |
| Publicis Groupe Sa | E:PUB | Media | 11.07 | 106.87 |
| Safran | E:SAF | Industrial Goods & Services | 10.05 | 101.82 |
| Legrand Promesses | E:LR | Industrial Goods & Services | 6.35 | 99.58 |
| Air Liquide | E:AI | Chemicals | 4.51 | 101.13 |
| Airbus Group | E:AIR | Industrial Goods & Services | 3.22 | 98.88 |
| Pernod Ricard | E:RI | Food & Beverage | 1.32 | 99.09 |
| Peugeot S.a. | E:UG | Automobiles & Parts | 1.20 | 100.40 |
| Sanofi | E:SAN | Health Care | 0.35 | 94.21 |
| Axa | E:CS | Insurance | -0.80 | 87.69 |
| Danone | E:BN | Food & Beverage | -0.94 | 106.02 |
| Unibail-rodamco | E:UL | Real Estate | -1.39 | 108.57 |
| Cap Gemini | E:CAP | Technology | -2.64 | 102.80 |
| Essilor International | E:EI | Health Care | -4.03 | 100.14 |
| Orange Sa | E:ORA | Telecommunications | -4.14 | 104.46 |
| Renault Sa | E:RNO | Automobiles & Parts | -4.66 | 100.89 |
| Vivendi | E:VIV | Media | -5.66 | 99.37 |

| Naam | Ticker | Sector | Diff% | CompPerf |
|-----------------------|---------|-----------------------------|-----------------------|--------------------------------------|
| | | | 1-1-2016 - 31-12-2016 | 1-1-2016 - 31-3-2016; _france Cac 40 |
| | | | 1 jaar | 2 maanden and 28 dagen |
| Valeo | E:FR | Automobiles & Parts | 20.17 | 102.72 |
| Bnp Paribas | E:BNP | Banks | 17.83 | 89.06 |
| Solvay | E:SOLB | Chemicals | 16.47 | 94.71 |
| L Oreal | E:OR | Personal & Household Goods | 14.94 | 107.61 |
| Saint Gobain | E:SGO | Construction & Materials | 14.21 | 102.92 |
| Societe Generale A | E:GLE | Banks | 13.31 | 80.92 |
| Vinci | E:DG | Construction & Materials | 11.99 | 116.96 |
| Credit Agricole | E:ACA | Banks | 11.68 | 92.43 |
| Publicis Groupe Sa | E:PUB | Media | 11.07 | 106.87 |
| Safran | E:SAF | Industrial Goods & Services | 10.05 | 101.82 |
| Legrand Promesses | E:LR | Industrial Goods & Services | 6.35 | 99.58 |
| Air Liquide | E:AI | Chemicals | 4.51 | 101.13 |
| Airbus Group | E:AIR | Industrial Goods & Services | 3.22 | 98.88 |
| Pernod Ricard | E:RI | Food & Beverage | 1.32 | 99.09 |
| Peugeot S.a. | E:UG | Automobiles & Parts | 1.20 | 100.40 |
| Sanofi | E:SAN | Health Care | 0.35 | 94.21 |
| Axa | E:CS | Insurance | -0.80 | 87.69 |
| Danone | E:BN | Food & Beverage | -0.94 | 106.02 |
| Unibail-rodamco | E:UL | Real Estate | -1.39 | 108.57 |
| Cap Gemini | E:CAP | Technology | -2.64 | 102.80 |
| Essilor International | E:EI | Health Care | -4.03 | 100.14 |
| Orange Sa | E:ORA | Telecommunications | -4.14 | 104.46 |
| Renault Sa | E:RNO | Automobiles & Parts | -4.66 | 100.89 |
| Vivendi | E:VIV | Media | -5.66 | 99.37 |
| Klepierre | E:LI | Real Estate | -6.02 | 108.53 |
| Bouygues | E:EN | Construction & Materials | -7.97 | 99.51 |
| Accor | E:AC | Travel & Leisure | -8.33 | 98.58 |
| Carrefour | E:CA | Retail | -10.36 | 95.86 |
| Engie | E:ENGI | Utilities | -22.20 | 89.49 |
| Veolia Environnement | E:VIE | Utilities | -24.17 | 101.27 |
| Nokia | E:NOKIA | Technology | -30.50 | 80.66 |





USA-NASDAQ - Nvidia Corporation - NVDA - Technologie - US67066G1040
Halbleiters - USD - 15-2-2017 - Hold(#26.02-7-10-2015)



USA-NASDAQ - Amazon.com Inc - AMZN - Distributie - US0231351067
Broadline Distributeur - USD - 15-2-2017 - Hold(#844.36-5-10-2016)









- **Lange historiek**
- **Geen weerstand**
- **Geduld**



Te volgen !!!!



20y / w

TransStock©

EURONEXT BRUSSELS - Recticel - E:REC - Chemicaliën - BE0003656676
Specialiteit Chemicaliën - EUR - 16-2-2017 - Hold(#6.42-21-12-2016)





Cdl=86.3 Volume-indicator



USA-NASDAQ - Carbonite Inc - CARB - Technologie - US1413371055

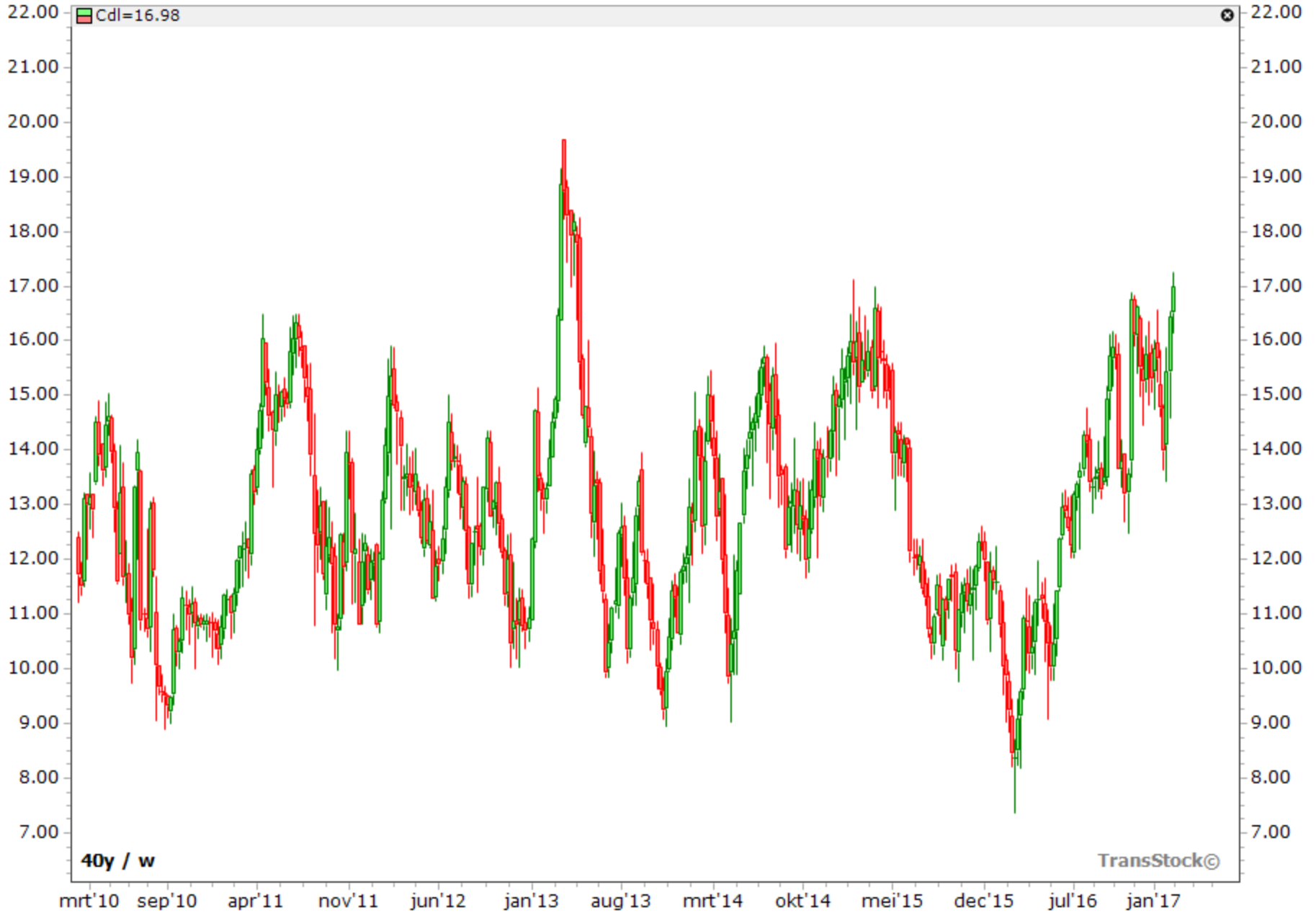
Computer Diensten - USD - 16-2-2017

Cdl=19.75 Volume-indicator



40y / w

TransStock©







VFB: 13^{de} TA-Dag

**Ik wens u nog een
aangename TA-dag!**